

SKY Harbor Weekly Briefing

SKYView: Downgrading EBITDA Growth

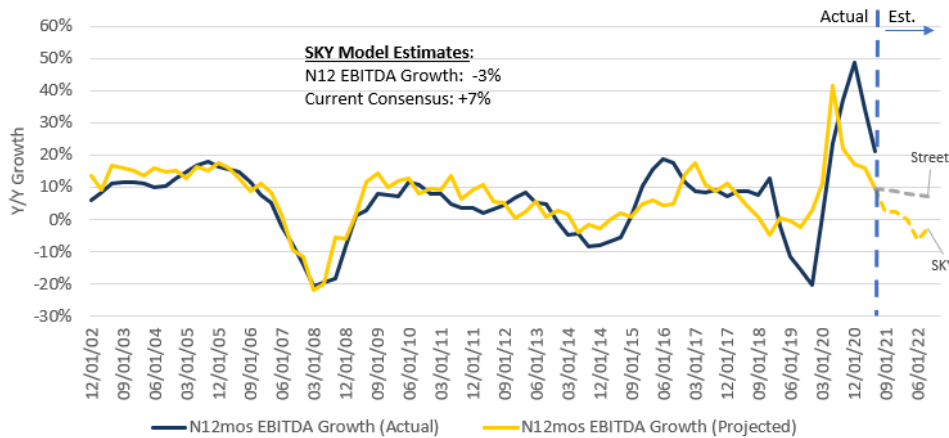
Coordinated efforts by central banks to stem inflation continue to increase the likelihood of a global downturn, all while exogenous shocks to the market further pressure corporate margins. Though consensus earnings expectations have inched down over the last several weeks, there is reason to believe that analysts will need to re-set estimates even lower, a dynamic that could be expedited by management commentary on upcoming Q3 investor calls. With this in mind, we use this *Weekly Briefing* to update our corporate EBITDA growth model, measuring the difference between our output and consensus expectations, and gauging the impact further pressure may have on credit fundamentals.

Most Independent Variables Trending Negatively

Various measures of CEO confidence have fluctuated over the last several months, with **expectations for overall business conditions in the coming year becoming less predictable and less likely to surprise to the upside**. At the same time, the US Dollar continues to march higher relative to other currencies (recently hit a 20-year high), with an aggressive Fed and a *relatively* stronger domestic growth outlook underpinning the recent surge. These factors, along with rising input costs and an overall slowdown in manufacturing activity, have necessitated a downward revision to corporate EBITDA growth estimates in recent weeks. **In our view, however, estimates have not come down enough**. Updating our four-factor regression model below, we now anticipate HY issuer EBITDA growth in the coming year to *decline* by approximately 3%, well below a consensus view of +7% growth.

S&P 1500 Index EBITDA Growth: Actual vs. Next 12mos SKY Model Projection

quarterly data, trailing 20 years



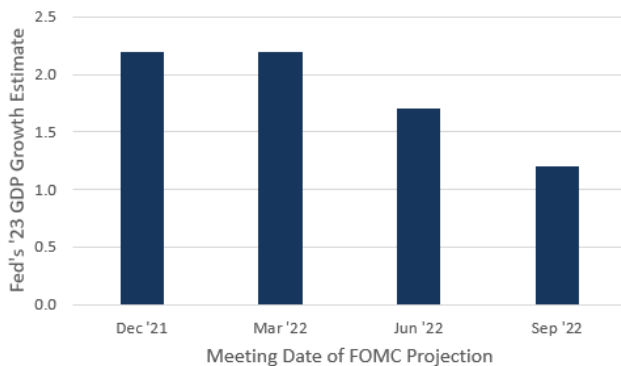
Source: SKY Harbor, Federal Reserve, Baltic Exchange, Chief Executive Magazine, Bloomberg

An Alternative Model Also Implies an Overly Optimistic Consensus View

Cognizant of a sizeable (1,000 bps) delta between our regression model output and consensus estimates, we thought it prudent to sanity-check projections using an alternative approach. Below, we present the historically tight relationship between US GDP growth (Y/Y, no lag) and US high yield issuer TTM EBITDA growth. Using the Fed's projection of 2023 US economic activity – which has fallen significantly over the last several quarters – **we find an implied corporate EBITDA growth rate of ~ 0% next year**. Though admittedly more optimistic than our model output, results still imply a reduction in consensus expectations may be on the horizon. And, in our view, **risks to both of our model estimates are skewed to the downside given the current economic backdrop**.

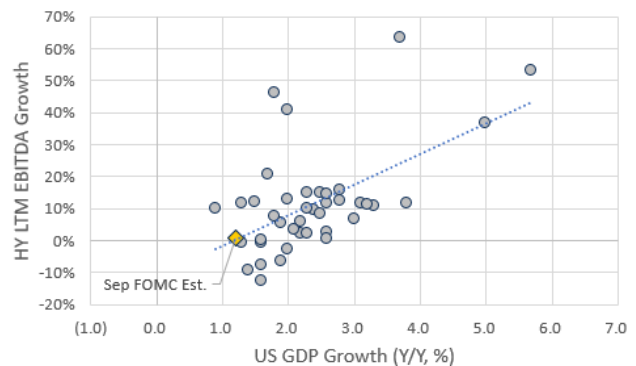
Fed Projection of '23 US GDP Growth Has Fallen

FOMC quarterly summary of economic projections



1.2% US GDP Growth Implies Flat EBITDA in 2023

quarterly data, trailing 10 years (ex-COVID)



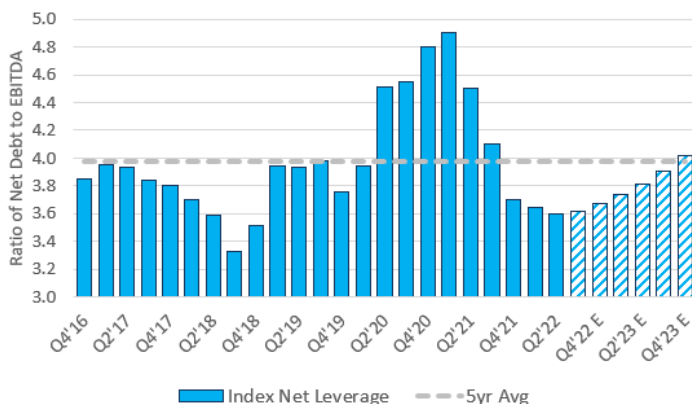
Source: SKY Harbor, Federal Reserve, Bureau of Economic Analysis, BofA Merrill Lynch, Bloomberg, Capital IQ

Simulating the Impact to HY Credit Metrics

At the time of publication – we use metrics through Q2'22 – average high yield net leverage and interest coverage ratios were 3.6x and 6.2x, respectively, both notably stronger than trailing 5-year averages. If we overlay our estimation of EBITDA growth over the next year (-3%), assume an 80/20 average fixed/floating debt mix, assume nearly all of the recent increase in rates negatively impacts floating rate debt (i.e. we assume little in the way of hedges in place near-term), and force companies to refinance fixed-rate debt 1 year ahead of maturity dates (with an interest expense uptick equal to the difference between current coupons and prevailing market yields), **we can clearly see credit metrics eroding over the next six quarters**. With that said, and under our current set of assumptions, **leverage and coverage ratios merely revert to their trailing 5-year average by the end of 2023**. Acknowledging that underlying assumptions are quite sensitive to any changes in the economic outlook, and with recent developments implying more downside than upside risk, relative strength in corporate balance sheets better position high yield index constituents to weather a recession than in recent years, in our view. Notably, **interest coverage is now at a better starting point (6.2x) than prior to COVID (4.7x) and in quarters leading up to the Global Financial Crisis (3.9x)**.

US High Yield Net Leverage Ratio

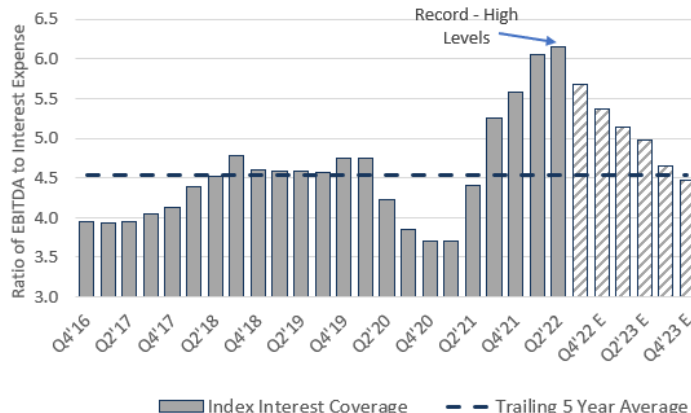
5 year time series; striped bars are SKY Harbor projections



Source: SKY Harbor, BofA Merrill Lynch, Bloomberg, Capital IQ

US High Yield Coverage Ratio

5 year time series; striped bars are SKY Harbor projections

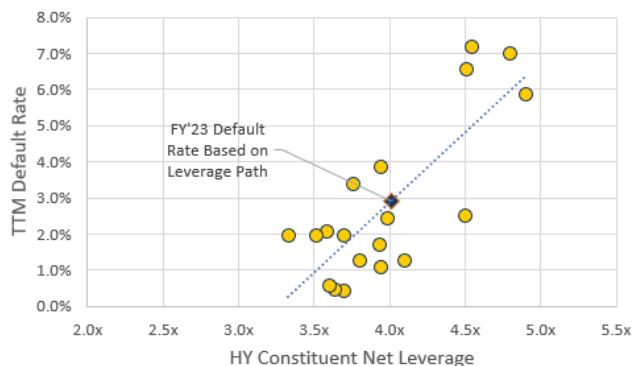


Implication is for Defaults to Rise

In our most recent *Weekly Briefing* entitled "[Valuation in Uncertain Times](#)," we put forth an updated 2023 default rate estimate of 3.7%, largely derived from an internal regression model. Though index net leverage and interest coverage metrics are not input variables for this model, they do correlate quite well to prevailing default rates over time. As demonstrated below, **our simulation of the path of leverage and coverage metrics by FYE23 imply a default rate in the 3% to 4% area, largely consistent with our regression model estimate**. Again, recognizing that underlying estimates are subject to change amidst an evolving economic backdrop, the proximity of our dual-method approach increases our overall level of confidence in the reasonableness of such projections given what is currently known by the market.

Est. Net Leverage Path Consistent w/ Below-Avg Default Rate

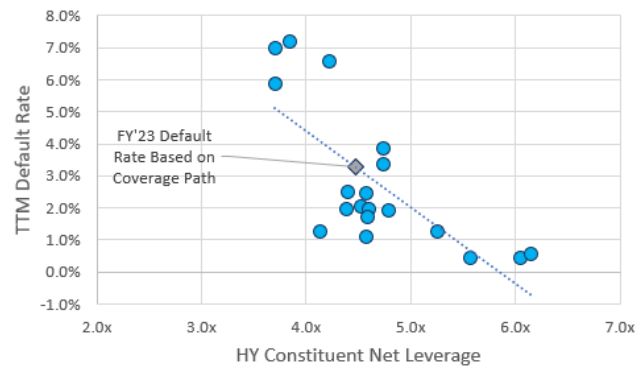
five years of quarterly data



Source: SKY Harbor, BofA Merrill Lynch, Bloomberg, Capital IQ

Decline in Int. Cov. to ~ 4.6x Also Consistent w/ 3%-4% Default Rate

five years of quarterly data



Risks Abound but Recent B/S Repair Provides Cushion

We are clearly of the belief that consensus expectations need to fall in the coming months, and anticipate EBITDA growth for high yield constituents will likely turn negative in 2023. With that said, rapid balance sheet repair in the post-COVID era has provided some cushion for issuers, which we think will translate into worsening – albeit manageable – credit metric migration in the coming quarters. Still, given downside risk to our underlying assumptions, we continue to think a focus on higher-quality credits within the ICE BofA US High Yield Index provides the best risk-reward tradeoff.

Important Disclosures and Disclaimers

This analysis and the opinions expressed herein are intended solely for institutional and professional investors that are responsible for assessing their own risk tolerances under prevailing market conditions. SKY Harbor Capital Management, LLC ("SKY Harbor") provides this document for informational purposes only. Nothing contained in this document is or should be construed as an advertisement, or an offer to enter any contract, investment advisory agreement, a recommendation to buy or sell securities of any kind, a solicitation of clients, or an offer to invest in any particular fund, product, investment vehicle, or derivative.

This document contains forward-looking statements that are based on SKY Harbor's current views and assumptions. Forward-looking statements such as the findings of our analytical research, our outlook for interest rates, Fed policy, the economy, high yield markets and the like, or our intended adjustments to the portfolios within our strategies are subject to inherent risks, biases and uncertainties that are beyond SKY Harbor's control and may cause actual results to differ materially from the expectations expressed herein.

The information contained herein is subject to change, and SKY Harbor is under no obligation to update any information contained herein. Certain information contained in this document has been obtained from third-party sources and, although believed to be reliable, has not been independently verified, and its accuracy or completeness cannot be guaranteed. SKY Harbor, its affiliates, officers, directors and employees hereby disclaim any liability whatsoever related to the use of this publication or its content and make no express or implied warranties of merchantability or fitness for any particular purpose or use with respect to the data, projections, analysis, content, or conclusions included in this publication.

Investing in securities involves risk of loss and past performance is not necessarily indicative of future results. Fixed income securities, especially high yield debt securities, are subject to loss of income and principal arising from credit risk, which is the risk that the issuer will be unable to make interest and principal payments when due. Material risks in investing in high yield debt securities also include, but are not limited to, opportunity cost (the risk that an issuer's credit trends deteriorate resulting in a higher level of compensation demanded by the market relative to the initial investment), interest rate risk, liquidity risk, selection risk, and overall market risk. In general, issuers of high yield debt securities have a greater likelihood of defaulting on the payment of interest or principal than issuers of investment grade bonds. There can be no assurance that the investment objectives described herein will be achieved or that substantial losses can be avoided.

Gross performance results do not reflect the deduction of investment advisory fees, which would reduce an investor's actual return. For example, assume that \$1 million is invested in an account with the Firm, and this account achieves a 6% compounded annualized return, gross of fees, for five years. At the end of five years that account would grow to \$1,338,226 before the deduction of management fees. Assuming management fees of 0.55% per year are deducted annually from the average annual AUM, the value of the account at the end of five years would be \$1,302,846, which is the equivalent of an annual compounded rate of 5.43%. For a ten-year period, the ending dollar values before and after fees would be \$1,790,848 and \$1,697,408, respectively. SKY Harbor's asset-based fees are generally billed monthly or quarterly in arrears. Please refer to the SKY Harbor's ADV Part 2A or applicable Offering Documents for more information on fees. Consultants supplied with gross results are to use this data in accordance with SEC, CFTC, NFA or the applicable jurisdiction's guidelines.

SKY Harbor is not a tax or legal advisor. Prospective investors should consult their tax or legal advisors before making tax-related investment decisions.

The ICE BofA Index data referenced herein is the property of ICE Data Indices, LLC ("ICE BofA") and/or its licensors and has been licensed for use by SKY Harbor. ICE BofA PERMITS USE OF THE ICE BofA INDICES AND RELATED DATA ON AN "AS IS" BASIS, MAKES NO WARRANTIES REGARDING SAME, DOES NOT GUARANTEE THE SUITABILITY, QUALITY, ACCURACY, TIMELINESS, AND/OR COMPLETENESS OF THE BofA INDICES OR ANY DATA INCLUDED IN, RELATED TO, OR DERIVED THEREFROM, ASSUMES NO LIABILITY IN CONNECTION WITH THE USE OF THE FOREGOING, AND DOES NOT SPONSOR, ENDORSE, OR RECOMMEND SKY Harbor or ANY OF ITS PRODUCTS OR SERVICES.

© 2022 SKY Harbor. This document may not be reproduced or transmitted, in whole or in part, by any means, to third parties without the prior written consent of SKY Harbor.